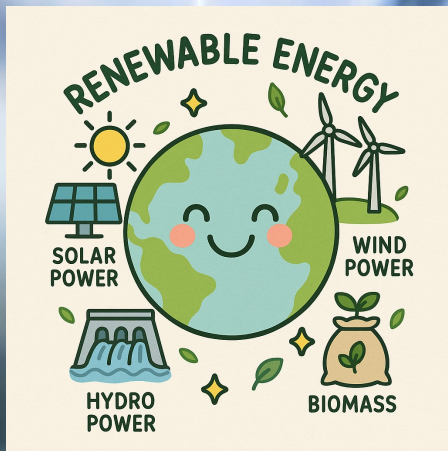
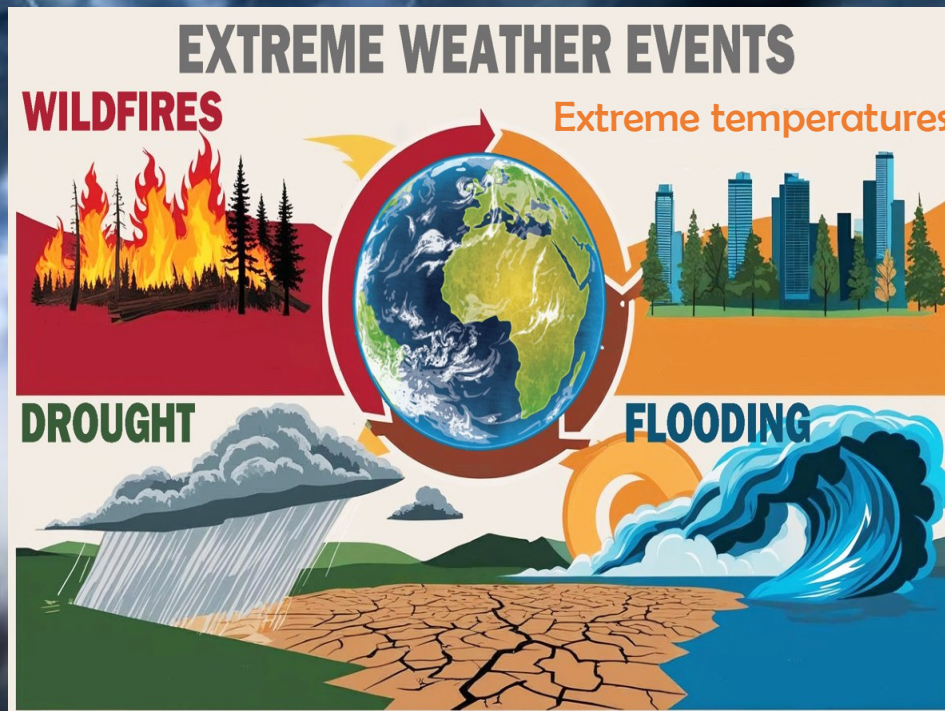
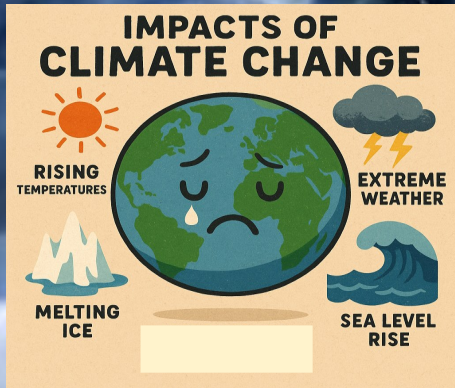
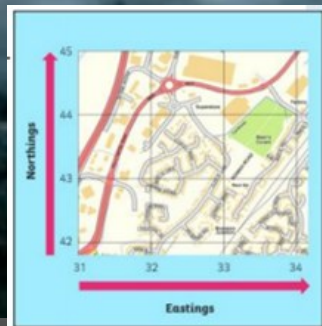


CHANGING CLIMATE,

CHANGING MINDS

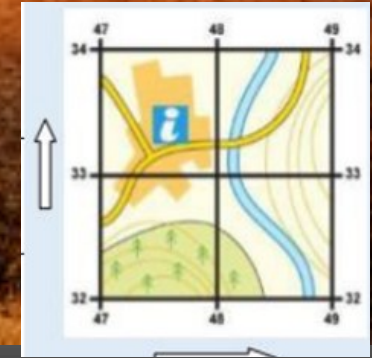


Solar Power	Energy we get from the sun. We use solar panels to turn sunlight into electricity.
Hydro Power	Energy made from moving water, like rivers or waterfalls to create electricity.
Biomass	Energy made by burning plants, wood and food waste to make heat and electricity.
Wind Power	Energy made by big wind turbines that spin when the wind blows, making electricity.
Climate Change	Climate change describes the shifts happening to the Earth's temperature and weather pattern.
Extreme weather	Really strong or unusual weather, like huge storms, heatwaves or flood, happening more often.



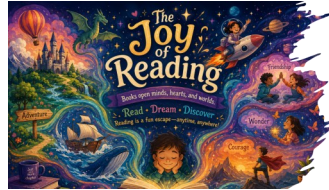
4 and 6 figure reference points

- Maps have grid lines on them which help to locate precise locations. Remember to go along the corridor and up the stairs.
- Step 1: Start at the left-hand side of the map and go east until you get to the bottom left-hand corner of the square you want. Write this number down e.g., 47(EASTING)
- Step 2: Move north until you get to the bottom-left corner of the square you want e.g., 33 (NORTHING)
- Step 3: Now put your two answers together e.g., 47 33. There is no need to add brackets, commas, dashes etc



Wray Common Citizens:

This half term, our assemblies will focus on inspiring a love of reading! We will celebrate the magic of reading and the adventures that books can unlock. Together, we will discover that every book is a doorway to adventure — and that a lifelong love of reading can begin with just one page.



English:

Using the picture 'Flooded' we will use a variety of writing skills such as: expanded noun phrases, subordinating clauses, fronted adverbials, before and after setting descriptions and prepositional phrases to create a changing story inspired by a form of extreme weather. Using the book 'King of the Swamp' we will be writing a persuasive letter. We will use the tools of emotive language, rhetorical questions and hyperbole.

PSHE:

- **We will be** able to identify some of the changes we will face as we become a teenager (physical and emotional) and the reasons for these changes
- We will know that reproduction needs a sperm and an egg
- We will develop an understanding of additional care that is needed in order to keep your body clean as you grow up
- We will understand in more detail personal **boundaries** (including physical); identify what we are willing to share with our most special people; friends; classmates and others; and that we all have rights to privacy
- We will be able to clearly express what we would do if we were made to feel uncomfortable
- We will be able to model **assertive language** to hypothetical situations
- We will understand that we have the right to challenge something, even if it comes from an adult, including online

Maths:

- Measure the area and perimeter of a shape.
- Recognising different angles and be able to classify them.
- Describe positions on grids using coordinates.

Art

We will be using the skill of collaging to create a final piece that represents extreme weathers.

Science

Making connections—How does the flow of liquids compare?

We will be exploring the relationship between viscosity and the flow of liquids through scientific enquiry. We will be recalling key knowledge from our learning and applying knowledge in new context.

Curriculum Coverage

PE:

- In football, we will be learning how to attack and defend by keeping possession, moving the ball towards goal and using simple skills and tactics
- In rounders, we will learn how to score points through striking and running, take on different fielding roles, and develop throwing, catching and batting skills.

RE:

We will understand that we share a common need to be treated well to live together peacefully.

We will understand that many people both religious and non-religious live by the Golden Rule to treat others as you would like to be treated.

We will know that beliefs we have personally shape the way we behave.