

Wray Common Primary School Newsletter



Inspiring Lifelong Learning



WELCOME BACK!

OFSTED

In case you missed the letter sent on Wednesday this week, please find a copy below:

Dear Parents and Carers

"The school fosters a strong sense of belonging and high aspirations for every pupil"

I am pleased to be able to share with you the OFSTED Report from our visit which took place on 10th and 11th February this year. The inspection was undertaken under the new OFSTED framework launched this year - which meant changes to both process and grading. The full report is can be found on our website [here](#), along with a letter from Surrey explaining the new grades.

GRADES AWARDED for WRAY COMMON

AREA	GRADE	MEAN
Personal Development and Well-being	STRONG	Excellent practice
Attendance and Behaviour	STRONG	Excellent practice
Early Years	STRONG	Excellent practice
Achievement	EXPECTED	High quality
Teaching and Learning	EXPECTED	High quality
Inclusion	EXPECTED	High quality
Leadership and Governance	EXPECTED	High quality
Safeguarding	MET	

Note: Safeguarding grade is either MET or UNMET

The report, pleasingly, highlights so many of our strengths. While *"excellent behaviour is a hallmark of Wray Common"*, I am proud that this is achieved through a nurturing, relational approach, not from a place of control. Inspectors evidenced that *"Leaders place pupils' character, happiness and emotional health at the centre of school life. They ensure that all pupils, including those who are disadvantaged or face additional challenges, feel fully included and valued."* This holistic approach, aligned with an *"ambitious curriculum"* and staff who *"care deeply"* for the children means that our children *"feel safe, happy... show strong self-discipline and... have highly positive attitudes to learning"*.

The whole staff team are proud to be part of your children's lives and we thank you for your ongoing support!

I'll end this letter how I end every Prospective Parent Open Morning:

"With Year 6 outcomes consistently significantly above National benchmarks, Wray Common Primary School is, and will continue to be, a high performing academic school. But we are, and will continue to be, much more than this. Wray Common is a:

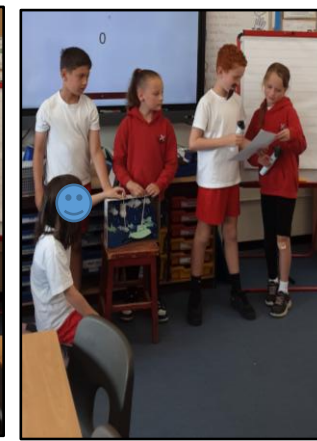
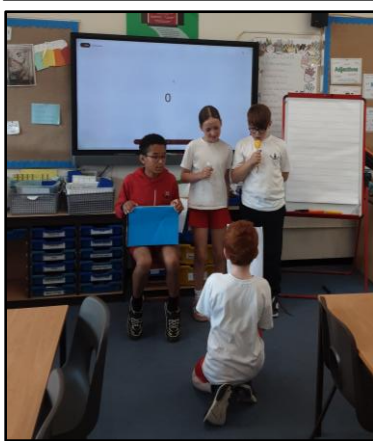
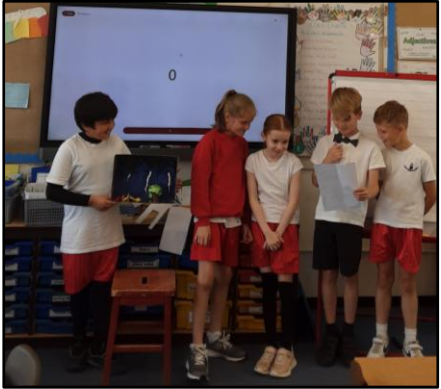
- series of memorable experiences;
- a community of care and support; and
- a home for all to learn, succeed and feel good about themselves.

This is our way, this is the Wray Common Way!"

Lloyd Murphy
Proud Headteacher

CHANGING CLIMATE, CHANGING MINDS

As part of our Impact Day, Year 4 immersed themselves in their geography topic *Changing Climate, Changing Minds* by stepping into the role of weather reporters. The children researched a range of extreme weather events, exploring their causes and the impact they have on people and the planet. They thoroughly enjoyed showcasing their learning in a creative way, designing their own reporting backdrops and props before confidently sharing their weather reports to the class.

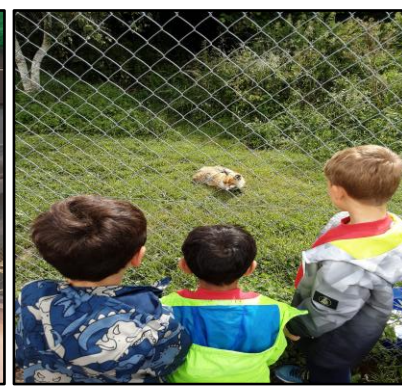


BRITISH WILDLIFE CENTRE

Year 1 had a fantastic trip to the British Wildlife Centre, where we learned all about some of Britain's amazing native animals.

During our visit, we saw rats, mice and even had the exciting opportunity to meet a hedgehog up close. We also learned fascinating facts about owls and discovered that the colour of their eyes can tell us when they are most active. Owls with black eyes are nocturnal, meaning they are awake at night, those with yellow eyes are diurnal and awake during the daytime, and owls with orange eyes are most active at sunset.

We were delighted to see a badger in its sett, as well as otters and deer. There was so much to see and learn throughout the day. After a busy morning exploring, we were very pleased when it was finally time for lunch! Although we experienced some very heavy downpours and got rather soggy, we didn't let the rain spoil our fun. We all thoroughly enjoyed our trip and came back to school having learned lots about British wildlife.



FOOTBALL TOURNAMENT

"We arrived at Battlebridge sports ground ready to do our best, it was hot and sunny, but nothing was standing in our way. Our first match of the day was against Lime Tree 2. We won 4-0 which boosted our confidence for our next two matches. Our next match was a tight match against Lime tree, but we worked well as a team and we succeeded and won 1-0. Our final match of the day was against St Johns we tried our hardest but unfortunately lost by 1 goal (final score 1-2). We were still delighted that we won 2 out of the 3 matches we played. Congratulations to St Johns for winning. We travelled back to Wray Common with the happiness of our accomplishment.

Thank you to the team, Poppy, Jess, Holly, Tabitha, Annie, Faye and Naomi and thank you to Mr Savedra and Miss Ball for helping us along this journey and supporting us. Finally, thank you to all the parents who came to support and cheer us on, all this meant so much to us." Written by Naomi.



"On the Friday before half term, a group of us went to Battlebridge sports ground to take part in a Year 4 football tournament. When we got there, we played our first game against Lime Tree and won a whopping 6-0 due to some great team work and individual skill. We kicked on by winning our next few games 5-0. We felt unstoppable! Our final game we sadly lost 2-1 and we felt like we had blown our chances of lifting the trophy. Amazingly, this was not the case as we won the league format on goal difference. Yay! Well done to - Harry, Harvey, Abel, Ehaan, Arthur, Cody and Noah!"
Written by Harvey.



SWIMMING GALA AT RAA - YEARS 5 AND 6

"We started by arriving at RAA at 12:30pm and got changed. After that, we got ready doing a quick warm up; we sat down ready for the races. While we waited we cheered for our teammates and had fun. The majority of our races we went, if not we came second, which meant we were leading to a win. We had two races - the individual and relay (four people racing together). Well done to everyone who participated to secure the win. Thank you to Miss Alice and Miss Ball for arranging everything and looking after us while we were there". Written by Ela, Billy and Katie.

Congratulations to the team who overall came 1st place out of the Large Schools category!

REMINDER - RSE UPDATE (SUMMER 2)

During the Summer 2 term, all pupils will take part in Relationships and Health Education (RSHE) as part of the PSHE curriculum. These lessons support children in understanding healthy relationships, managing feelings, staying safe and developing awareness of physical and emotional wellbeing. Children in Years 5 and 6 will also take part in age-appropriate Sex Education lessons, covering human development, puberty and reproduction, delivered sensitively and in line with national guidance.

- [RSE Policy: Policy statement - health \(to include sex education\)](#)
- [PSHE End Points Overview \(Curriculum Progression\) and Overview Video \(Curriculum Sequence and Content](#)

If you would like further information about the curriculum or to view any teaching materials, please contact the school office.

PE/SWIMMING TIMETABLE FOR SUMMER 2

	YR	Y1	Y2	Y3	Y4	Y5	Y6
Mon	PE		PE				
Tues				PE	PE		PE
Wed	Swimming	PE				PE	
Thu			PE		PE	PE	
Fri		PE		PE			PE

IN-SCHOOL SWIMMING GALA INFORMATION - REMINDER

We will be holding our in-school swimming gala next week - Friday 12th June 9:00am - 12:00pm for Years 1, 2 and 3 and on Friday 19th June for Years 4, 5 & 6

Please can we ask you to note the following arrangements for the galas;

- Parents are encouraged to come and watch their child swim but we ask that you only come for your child's year group. Spectators will be sat outside the pool and space is limited.
- After school drop off, parents and carers are requested to exit the school as usual and then re-enter through the School Office nearer the start time of their child's gala. Please do not wait in the playground.
- On the day of their gala, children will need to bring to school a swimming costume, swimming hat, goggles, crocs or flip flops, two towels and a robe/dressing gown/sweatshirt/hoodie to keep them warm while they are waiting for their races.
- **No photography / filming is allowed during the gala.**
- Parents and Carers are asked to use the toilet facilities in the Library and Music Room close to the pool, but school children will have to use their own classroom toilets during the day.
- Please park considerately around the local roads, respecting our neighbours' driveways.

Friday 12 th June	Friday 19 th June
Year 1 (whole year) 9:00 - 10:00	Year 4 (whole year) 9:00 - 10:00
Year 2 (whole year) 10:00 - 11:00	Year 5 (whole year) 10:00 - 11:00
Year 3 (whole year) 11:00 - 12:00	Year 6 (whole year) 11:00 - 12:00

UPCOMING EVENTS

Mon - Wed - Someone Special Sales (Friends)

Wed - Reception swimming

Fri - Non Uniform Day (Friends)

Fri - Swimming Gala Y1-3

Fri - Sleepover Y4



FUNDRAISING

On Sunday 26th April, Richard Hastings - dad of Emily and Florence - ran the London Marathon in an impressive 3 hours and 21 minutes despite suffering from terrible cramp. What fantastic resilience! In doing so, he has also managed to raise an incredible £1,870 for the Friends of Wray Common! These vital funds will go towards enhancing the learning of all children at Wray Common School! Well done and thank you Richard!



THANK YOU

This week marks National Volunteers' Week and on behalf of everyone at Wray Common, we would like to say a heartfelt thank you to our wonderful community of volunteers, including parents, carers, extended family members, Governors and the Friends of Wray Common.

We are incredibly grateful for the time, energy and support our volunteers give to the school. Whether fundraising, listening to children read, accompanying classes on trips, or helping with the many activities that keep our school running smoothly, your contributions make a real difference.

Thank you for everything you do to support our children, staff and wider school community.



HONOUR BOOK

RH	Lucas	For challenging himself to collaborate with peers in different areas within Discover and Learn.
RP	Maisie	For excellent collaboration with her peers during Discover and Learn this week - well done for learning with different groups of friends!
1LP	Hugo	For super effort in reading groups this week.
1P	Eddie	For his consistent hard work in every lesson- always aspiring to be the best he can be.
2T	Maisie	For her courage settling into a new school and trying her best with her learning.
2F	Saniye	For using creative adjectives when describing a woodland setting.
3BM	Theo	For being a kind and supportive friend, always coming to school with a smile and a positive attitude.
3F	Ellis	For contributing meaningful and mature answers in our PSHE lesson about families.
4B	Harvey	For being a supportive member of the class and helping another child when they were stuck for ideas in their work.
4S	Leonie	For being a good friend to all in 4S.
5A	Miles	For making thoughtful contributions to all lessons to share his knowledge, ideas and enthusiasm
5J	David	For always having a growth mindset and a determination to succeed in his learning.
6C	Lexi	For working hard to produce a fantastic piece of completed writing this week.
6F	Rupert	For working hard to learn all his lines for the school production - he even knew them before our very first rehearsal!

We are hiring!

Teaching Assistant

Perm, Part Time

Closes: 9am - 8 June



Receptionist

Perm, Part Time

Closes: 9am - 17 June



Class Teacher - Maternity Cover

FTC, Full Time

Closes: 9am - 8 June



School Committee Member (Governor)

Voluntary Role

Closes: 30 June



SEN Learning Support Assistant

FTC, Part Time

Closes: 9am - 17 June



Class Teacher

Perm, 2 days per week

Closes: 9am - 15 June



Class Teacher

Perm, 3 days per week

Closes: 9am - 15 June



View vacancies at:
greensandacademytrust.co.uk



General Sale now LIVE!

The
CIRCUS
is coming to Wray Common!

Saturday 20th June 2026



Scan for tickets!

+ Summer Solstice
Party

General Sale now LIVE!

bit.ly/wraycommoncircus

Tickets:

Circus + Party Adult - £20	12:30pm Gates Open
Circus + Party Child - £17	1:30pm Big Top Opens
Circus + Party Family Bundle £70 (2x Adults 2x Child + 4x Drinks)	2-4pm Live Circus Show
Party Only Adult - £4	4-6pm Summer Solstice Party
Party Only Child - Free	

Performed by the INCREDIBLE

**HAPPY'S
CIRCUS**



FOWC PROUDLY PRESENT
THE

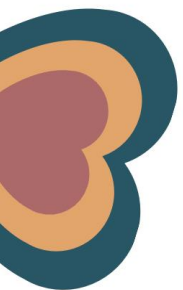
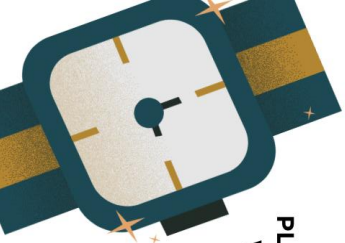
SOMEONE SPECIAL SALE

MONDAY 8TH JUNE -
WEDNESDAY 10TH JUNE

DURING SCHOOL HOURS

EACH GIFT £4

PLEASE BRING CASH IN A SEALED ENVELOPE
WITH THE VALUE + CHILD'S NAME/CLASS
WRITTEN ON THE FRONT



FRIENDS OF WRAY COMMON

PRESENT

ICE

POP

FRIDAYS!

EVERY FRIDAY FROM 5TH JUNE

AFTER SCHOOL

50P A POP!





Non-Uniform Day Friday 12th June

Children are invited to wear any non-uniform of their choice in exchange for a donation to the FOWC RAINBOW Hampers. These will be the raffle prizes to be drawn at the Circus on 20th June. The item colour for your child's year group is listed below:

Reception - Red

Year 3 - Green

Year 1 - Yellow

Year 4 - Purple

Year 2 - Pink

Year 5 - Orange

Year 6 - Blue

Please bring your donations outside the school office on Friday 12th June from 8.30-9.00am.
Suggested items: alcohol, soft drinks, sweets, chocolate, pamper items or craft items.



SUMMER HOLIDAY CLUB!

Wray Common Primary, Redhill

Multi Activity Holiday Club

- Week 1: 20th - 24th July
- Week 2: 27th - 31st July
- Week 3: 3rd - 7th August
- Week 4: 10th - 14th August
- Week 5: 17th - 21st August
- Week 6: 24th - 28th August

HAF Spaces Available!



BOOK TODAY AT: CAMPGLIDE.CO.UK



HAF



Camp Glide are offering

FULLY FUNDED SPACES

This Summer!

WESTVALE PARK

WRAY COMMON



Wray Common:



Westvale:



Funded By The Government