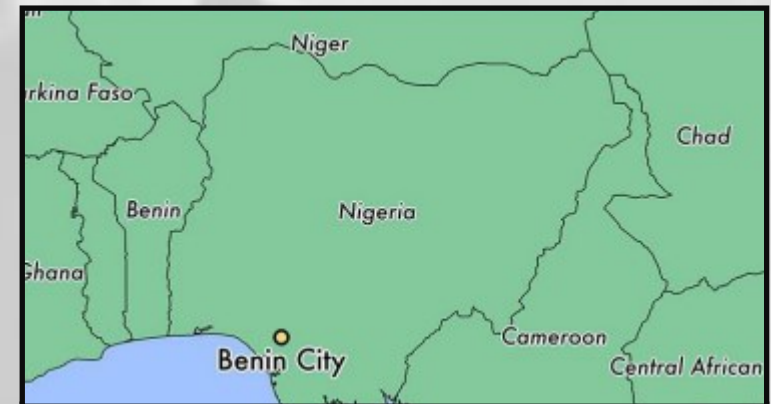


THE KINGDOM OF BENIN

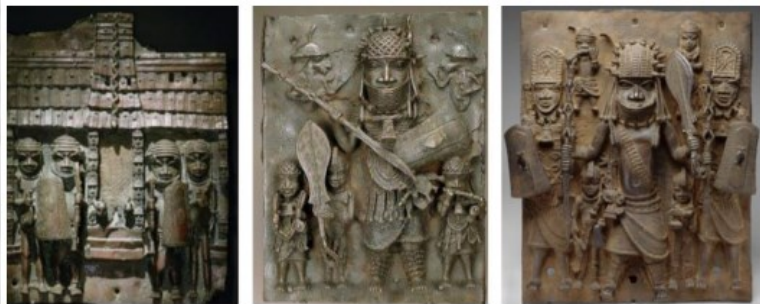
The Golden Thread

Throughout all our lessons about The Kingdom of Benin this half term, we will be revisiting the question:

“Should we give the Benin Bronzes back to Nigeria?”



Common misconception: The Kingdom of Benin is not in the same location as the modern-day country called Benin. It is now in Nigeria and known as Benin City. It is the capital of the Edo State in southern Nigeria.



Benin artefacts called 'The Benin Bronzes'. The two largest collections of Benin Bronzes are located in the Berlin Museum (Germany) and British Museum in London.

EARLY BENIN TIMELINE FOCUS

The Kingdom of Benin was home to the Edo people who, in around 900 CE, began clearing parts of the rainforests of West Africa to build their homes.

The Edo people worked together to build a community of farmers and craftspeople who traded successfully.

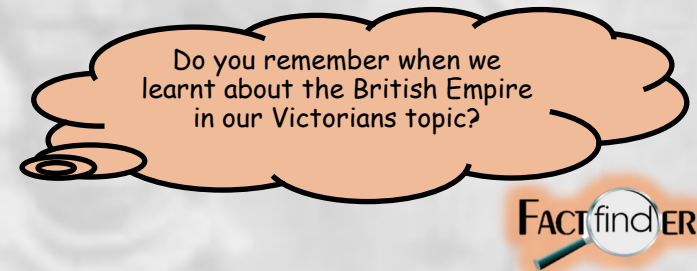
Small settlements soon grew into the larger Kingdom of Igodomigodo, which was ruled by kings called Ogisos.

After being governed by over 30 different Ogisos, the kingdom was then controlled by a new dynasty of rulers, called the Oba.

Key Vocabulary	Definition
Oba	A king, or chief in the Benin Kingdom.
Ogisos	The first kings of Benin. Ogisos means 'Rulers of the Sky'.
Empire	Lots of countries, or states, ruled by a single monarch or ruler.
Civil War	A war between people who live in the same country.
Oral Tradition	The passing down of events from the past— by word of mouth.
Colonisation	When invaders take control of a county by force and then live among the native people.
Trade	The exchange of goods or services. Benin imported weapons, ivory, cloth, copper and slaves.

TIMELINE

900	1000	1170	1440	1472	1700	1897
Edo people clear forests and build villages	Villages become a Kingdom	Oba dynasty begins	Ewuare expands Kingdom into an Empire	Portugese explorers and traders arrive	Civil war caused by uncertain line of succession	British invade and burn Benin City; kingdom becomes part of British Empire



THE KINGDOM OF BENIN

YEAR 6

English

As writers, we will develop a sense of character and use flash-backs to add detail and excitement to a story. We will continue to use a range of sentence types and punctuation to enhance the flow of our writing and develop our use of figurative language.

Wray Common Citizens

This half term, our assemblies will focus on the value of courage. We will be exploring personal examples of courage shared by both teachers and children, as well as reading stories that highlight courageous acts.

Maths

We will be revisiting prior knowledge from our time in Year 6 and also knowledge from Years 3-5. We will be applying this knowledge to a range of complex problems and developing our strategies for problem solving.

PSHE

We will focus on 'Looking After Ourselves'. We will recognise the benefits of leading a healthy lifestyle; recognise signs of early illness; learn that looking after mental wellbeing is an important part of daily life just and know how, where and when to seek adult support if we are worried about our health.

RE

We will be exploring, for Christians, what difference it makes to belong to God's kingdom. We will also be learning about Christians actions in the World, in response to new life, at a personal, local, national and global level.

Curriculum Coverage

Science

We will describe how living things are classified into broad groups according to common observable characteristics and based on similarities and differences, including micro-organisms.

Music

As musicians, we will further develop our sight-reading skills, specifically focusing on note names and durations on the glockenspiel. We will refine our ability to read and play melodies accurately.

PE

In athletics, we will set challenges, for distance and time, that involve using a variety of styles and combinations of running, jumping and throwing. In rounders, we will be developing the quality and consistency of their fielding skills.

CAPTURE

We will be reminding ourselves of what it looks like to be an expert learner at Wray Common and why it is important. We will consider how we can put our CAPTURE skills into practice during our learning.

Geography

We will compare our local area with the wider world, identifying physical characteristics, naming UK counties, exploring grid references including the equator and the tropics and exploring land use.