



WELCOME BACK!

THE ROMANS

As part of Year 4's Impact Day for their new topic, *The Romans*, the children were immersed in life as Roman soldiers. They explored Roman shields, learning how different symbols represented specific meanings and were linked to different legions. Working creatively, the children designed and created their own Roman shields before learning a range of Roman commands, which they enthusiastically practised outside.



GUARDIANS OF OUR PLANET

This week, Reception kick started their new topic Guardians of our Planet by thinking about all the things that make our world wonderful and we embarked on a Spring walk to the Nature Hub in the glorious sunshine. We noticed that there were lots of mini beasts out and about and we could hear the birds singing. We spoke about the buds and blossom that can often be seen on trees during spring and the new animals that may be born. We noticed some new trees that were beginning to grow on the field, too which had sticks to support them with growing upwards - just like our beanstalks from Gattin Park!



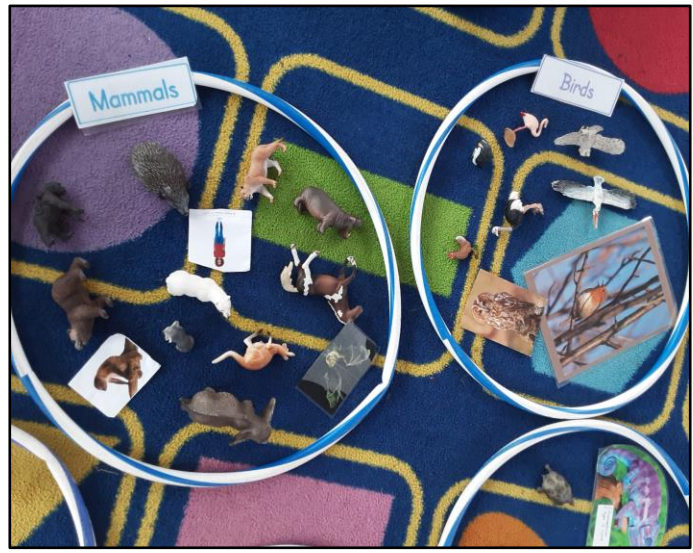
LUNGS OF THE EARTH

Year 3 have launched their exciting new topic, *Lungs of the Earth*, where they are learning all about rainforests and why they are so important to our planet. On Impact Day, the children explored different collage techniques and used natural materials to create their own rainforest collages. From layered leaves to textured bark and seeds, the artwork beautifully captured the colours and richness of rainforest environments. The children showed great creativity and teamwork!



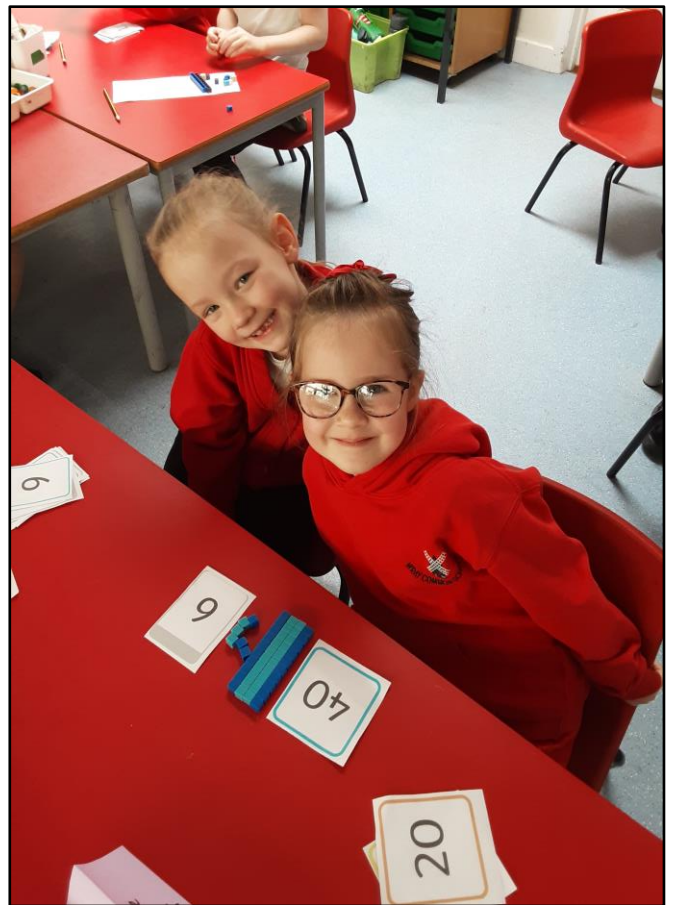
SCIENCE

Year 1 delved into the animal world in their science lessons this week. We acted as real scientists by working together to group the animals we had identified. We learned about the characteristics that define each group - birds, fish, mammals, reptiles and amphibians.



MATHS

In maths, Year 1 have been working together to count, read and make 2 digit numbers. We asked each other questions like, how many tens are there? How many ones are there?



Attendance Matters

At Wray Common Primary School we expect children to attend school every day, as long as they are fit and healthy enough to do so. Everyday attendance at school and good punctuality are vital for pupils to get the most out of their education. We seek to support children and their parents and carers as best we can to make this a success.

Reporting absences

All absences must be reported on a daily basis by 9.20am. If a child is absent for 5 days or more, we ask that parents provide **medical evidence** for the absence.

If a child is absent from school with no explanation, it will be marked as an unauthorised absence.

If a child is absent without explanation from their parents or carers, for the equivalent of 5 days or more (which do not need to be consecutive) within a 10 week period, parents and carers will be liable to receive a penalty notice.

Requesting a leave of absence

Term dates are published well in advance, allowing parents to plan family holidays outside of term time.

As such, please be aware that The Education (Pupil Registration)(England)(Amendment) Regulations 2013, which became law on 1st September 2013, state that Headteachers may not grant any leave of absence during term time unless there are exceptional circumstances. Exceptional circumstances would only ever be considered on the rarest occasion in which a child's absence from school is wholly unavoidable.

Should parents and carers still choose to take their children out of school without the approval of the school, for 10 sessions (the equivalent of 5 days) or more, which do not need to be consecutive, they will be liable to receive a penalty notice upon their return to school.

Each parent is liable for a penalty notice for each child who is absent from school. If a child has not had a penalty notice in the last 3 years, the amount payable if paid within 21 days, is £80. Thereafter, the amount increases to £160, if paid between 21 and 28 days.

If a child has had a penalty notice in the last 3 years, the amount payable is £160 per parent, per child, if paid within 28 days.

If a penalty notice remains unpaid after 28 days, the Local Authority will consider a prosecution in the Magistrates Court.

If a child has had 2 penalty notices in the last 3 years, a 3rd penalty notice would not be issued - The Local Authority would consider prosecution under s444 Education Act 1996.

Thank you for your ongoing support - children's attendance at Wray Common continues to be excellent.

Did you know?

If your child misses 1 day of school every two weeks, this will add up to 20 days each year.

Over children's 13 years at Primary and Secondary School, this would be the same as them missing 1.5 years of school.

Reasons for absence when children are unwell

Children should attend school unless they:

- are not well enough
- have been physically sick and/or had diarrhoea within the previous 48 hours

When children become unwell during the school day

If a child becomes unwell during the school day, they will be supported by school staff. If it is felt that a child is too unwell to continue with their learning, they will wait in the medical area outside the school office while parents or another nominated person, are contacted.

How is attendance monitored?

Every half term, attendance and punctuality are monitored. Schools have a **statutory duty** to report on children's attendance when it has fallen below 95%. This will include writing to parents to make them aware of their child's attendance level and, where appropriate, seeking to work with them to support improved attendance for their child.

Punctuality

Registration is completed promptly at 8.50am. If your child arrives after this time, they will be marked as late.

Persistent lateness disrupts children's education and can lead to poor attendance.

Did you know?

Being just 10 minutes late each day is the same as missing 50 minutes a week. That is almost 1.5 weeks in a year. Over a child's 13 years at Primary and Secondary School, this would be the same as missing almost half a year of schooling.

SUMMER TERM 2026 – DATES

APRIL 2026		Description	Time
Monday	13	First Day of Term	Normal school times apply
Monday	13	School led clubs start	Details to follow
Thursday	16	Volunteer Induction & Safeguarding Training	9:00 a.m.
Monday	20	VR Workshop Y3 & Y5	During school time
Tuesday—Thursday	21—23	Bikeability Level 1	During school time
Wednesday	22	Wray Common's Got Talent	During school time
Tuesday	21	Feet First Training 3EM	During school time
Thursday	23	Feet First training 3F	9:00 a.m.
Tuesday	28	Learn with Your Child—Juniors	8:50 a.m. —9:20 a.m.,
Wednesday	29	Learn with Your Child—Infants	8:50 a.m. —9:20 a.m.,
MAY 2026			
Monday	04	May Day Bank Holiday	School closed
Monday - Thursday	11-14	KS2 SATs Week	During school time (a.m.).
Friday	15	Friends Paint n Sip	7:30 p.m.
Monday	18	Year 4 Roman Workshop	During school time
Tuesday	19	Y3 Rainforest Day	Details to follow
Tuesday	19	Arts Soiree	Details to follow
Wednesday	20	Y5 Open Cricket Event (invited children only)	Details to follow
Thursday	21	KS1 and KS2 Sports Day and Family Picnic	Timetable to follow
Friday	22	School Class and Leavers Photos (a.m.)	During school time
Friday	22	Celebration Medals Assembly	2:20 p.m. (by invitation)
Monday - Friday	25-29 May	Half Term Holiday	
JUNE 2026			
Monday	01	INSET DAY (No School for Children)	School closed
Tuesday	02	Y6 Girls Cricket Event (invited children only)	Details to follow
Thursday	04	Y1 Wildlife Centre trip	Details to follow
Thursday	04	Interschools Swimming Gala (invited children only)	Details to follow
Friday	12	Y1, 2 3 Swimming Gala	Dates to be confirmed
Friday	12	Year 4 Sleepover	Details to follow

JUNE 2026 CONT/D			
Monday	15	Friends' someone Special Sale	During school time
Tuesday	16	Friends' someone Special Sale	During school time
Tuesday	16	Y6 Open Cricket Event (invited children only)	Details to follow
Tuesday	16	Year 6 + 1 Reunion	4:30 p.m.
Wednesday	17	Friends' someone Special Sale	During school time
Friday	19	Y4, 5, 6 Swimming Gala	Dates to be confirmed
Saturday	20	Friend's Circus Event	Details to follo
Tuesday	23	Family Day Assembly	Details to follow
Thursday	25	Family Day Assembly	Details to follow
Thursday	25	District Sports (invited children only)	Details to follow
Monday	29	New Reception Parents Evening	5:45 p.m.
Monday	29	Year 6 Sparkfish Transition Workshop	During school time
Tuesday	30	Secondary School Induction Day (Year 6)	During school time
JULY 2026			
Thursday	09	Year 6 Production (Evening Performance)	6:15 p.m.
Wednesday	15	Reports home to parents/carers	During school time
Thursday	16	Optional Parents' Meetings	Booked appointments only
Thursday	16	Year 6 Leavers' Ball	6:00 p.m.
Friday	17	Year 6 Leavers' Assembly	9:00 a.m.
Friday	17	Celebration Medals Assembly	12:45 p.m.
Friday	17	Break up for the Summer Holidays	1:35 p.m. pick up KS1 1:40 p.m. pick up KS2
	20 July - 1 Sept	Summer Holidays	
SEPTEMBER 2026			
Tuesday	01	INSET DAY (No School for Children)	School closed
Wednesday	02	Autumn Term (first day back for children)	

UPCOMING EVENTS

Mon - VR Workshops (Y3 and Y5)

Mon - Volunteer Safeguarding Training (5pm, online)



Tues, Wed and Thu - Bikeability (Y4)

Tues and Thu - Feet First (Y3)

Wed - Wray Common's Got Talent part 1

FRIENDS OF WRAY COMMON

A huge thank you to everyone who took part in the Friends of Wray Common Easter Challenge - together, we've raised an amazing £700!



And now, the moment we've all been waiting for... drumroll, please... 🎉 Congratulations to our lucky winners! **Mariam (1LP)**, you've won a Family Pass to Discovery Land at Priory Farm!

Lily Rose (Caterpillars) and **Finley (1LP)**, you've each won 2 tickets to the Circus on 20th June! 🎪

Please collect your prizes from the office on Monday. Well done to our winners, and a big thank you to every little explorer who made this event such a fantastic success!

LEARN WITH YOUR CHILD - READING THE WRAY COMMON WAY

This half term, parents/carers are invited to take part in a Learn With Your Child session which will focus on how we teach Reading at Wray Common and how you can support your child at home. Please see further details below:

Tuesday 28th April: Juniors Years 3 to 6

- 8.50am Miss Fosbueary will share our approach to Reading in the main hall
- 9.05am activity in class with your child
- 9.30am finish

Wednesday 29th April: Reception to Year 2

- 8.50am Miss Palmer will share our approach to Reading in the main hall
- 9.05am activity in class with your child
- 9.30am finish

FUNDRAISING

On Sunday 26th April the Dad of Emily (3EM) and Florence (1LP) is running the London Marathon. He has been training hard and is aiming to complete the course in around 3 hours! He is doing this to raise money for Friends of Wray Common. If you would like to sponsor him, here is the link to his Just Giving page: [Richard Hastings is fundraising for Friends of Wray Common.](#)

Good luck, Richard!

HONOUR BOOK

RH	Ivy	For sharing what she noticed during our Spring Walk and comparing with her peers.
RP	Lyra	For demonstrating confidence when talking about the learning in our Science Floor Book.
1LP	Olivia	For always being a kind and helpful member of our class.
1P	Ophelia	For working so hard to improve her handwriting and keeping it so neat.
2T	Spencer	For his effort and enthusiasm in reading workshop lessons.
2F	Bodhi	For making a conscious effort to be ready to learn and regularly demonstrating his best in lessons this week.
3EM	Michelle	For contributing thoughtful ideas to class discussions about our new rainforest topic.
3F	Luca	For showing great enthusiasm to our new topic and contributing his ideas.
4B	Callum	For excellent contribution to class discussion during our history lessons this week.
4S	Archie	For demonstrating kindness by sacrificing his own race in PE to cheer on and support his friend who was finding it tricky.
5A	Sofia	For excellent collaboration in science, showing great leadership skills when dissecting flowers in a group.
5J	Grace	For her clear, confident presentation to the class in Spanish, using the correct vocabulary.
6C	Nate	For contributing lots of descriptive phrases during our writing lessons and working really hard to improve arithmetic in maths.
6F	Lily	For a fantastically focused and conscientious approach to her learning all week. Keep it up Lily!



The Easter Challenge
raised an INCREDIBLE
£700 !!!



CONGRATULATIONS TO
THE WINNERS OF THE

EASTER CHALLENGE!



MARIAM, 1LP
DISCOVERY LAND
FAMILY PASS



LILY ROSE, CATERPILLARS
CIRCUS TICKETS X 2



FINLEY, 1LP
CIRCUS TICKETS X 2



CONGRATULATIONS!

PLEASE COLLECT YOUR PRIZES FROM THE OFFICE



Early Bird Tickets are nearly
SOLD OUT!!!

The
CIRCUS
is coming to Wray Common!

Saturday 20th June 2026

12:30pm Gates Open
1:30pm Big Top Opens
2-4pm Live Circus Show
4-6pm Summer Solstice Party



+ Summer Solstice Party!

TICKETS NOW ON SALE!

bit.ly/wraycommoncircus

Early Bird Tickets

Adult £15

Child £12

Family Bundle £50

(2x Adults 2x Child

+ 4x Drinks)

General Sale

Adult £20

Child £17

Family Bundle £70

(2x Adults 2x Child

+ 4x Drinks)

Performed by the **INCREDIBLE**

**HAPPY'S
CIRCUS**

PAIN + SIP SOCIAL



BROUGHT TO YOU BY THE
FRIENDS OF WRAY COMMON

FRIDAY 15TH MAY

7PM FOR A
7:30PM START



BRING
YOUR
OWN
BOTTLE!



TICKETS: [BIT.LY/WRAYCOMMONPAINT](https://bit.ly/wraycommonpaint)
£35 P/PERSON

INCLUDES ALL MATERIALS + MASTERPIECE TO TAKE HOME
+ GLASS OF FIZZ ON ARRIVAL

The Beauty Box Children's Birthday Pamper Parties



'The hidden gem in the heart of Redhill'

07880-584-625

- The Beauty Box Redhill Surrey



THE BEAUTY BOX

CHILDREN'S PAMPER PARTY MENU



'Little Divas'
4-8yr olds

File & Polish on fingers or toes, glitter tattoo & magical fairy dust hair and optional Group

Mini Facial Tutorial
£35pp

'Mini me'
9-12yr olds

Nail tidy & polish on fingers or toes and a Group Mini Facial

Tutorial
£40pp

'Teen time'
13-15yr olds

Mini Manicure, Pedicure, Teen facial (with home care advice)

Touch of colour make up or a Group Facial Tutorial with nail paint.
£45pp

'Sweet sixteen'
16-17yr olds

Gel on fingers or toes, Mini Facial, or St Tropez Tan
£45pp

Min 6 children max 10

Drinks, cupcakes & fruit served with all packages

All parties can be tailor made.

Extra luxuries include...lunch option, jewellery making, party bags, drinks & grazing boards for the adults at an extra cost.

07880-584-625

The Beauty Box Redhill

