

# Phonics Intent

*"Our Phonics curriculum is designed to create confident, lifelong readers and writers the **Wray Common Way.**"*

Our intent at Wray Common is to equip all children with the knowledge and skills required to become confident readers and writers. We are passionate about nurturing a love of reading because we know that reading has the power to unlock a wealth of opportunities for learning across the curriculum. We want our children to become accurate, fluent readers who read with confidence, pace and expression. We recognise the importance of phonics in allowing children to become expressive writers who can communicate their ideas effectively. We believe that the most effective way of achieving this aim is by providing our pupils with a secure understanding of phonics. Learning the relationship between the sounds of spoken language (phonemes) and the letters, or groups of letters, of the written language (graphemes) in an enjoyable, fun, systematic way is how our children will become proficient in early reading and writing.



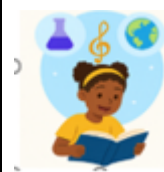
## Ambitious

- Little Wandle phonics sets high expectations for all children providing challenge and support throughout a progressive scheme
- Regular, rigorous, assessment opportunities mean learning is adapted to meet the needs of all children. As a result of this assessment, interventions and challenge are put in place to ensure all children make progress.
- Children's reading books are accurately matched to their reading level and this is reassessed regularly.
- While we follow the Little Wandle phonics scheme with fidelity, teachers are well trained to adapt and respond to children's learning.
- Teaching assistants are effectively trained to deliver high quality, effective interventions.



## Immersive

- Beginning in EYFS, children are immersed in a language rich environment, through talking and listening, rhyme and rhythm, song and stories.
- Children are read to and read with at any given opportunity, sharing stories and being immersed in the spoken and written language.
- Classroom displays and resources aid children in applying their phonic knowledge to other areas of learning. EYFS and KS1 classrooms display large grow the code posters for easy reference. While children in all year groups from Reception to Year 6 provide grow the code mats for children to access.



## Connected

- Little Wandle provides a carefully sequenced, progressive curriculum that connects phonics, reading and writing.
- Children are encouraged to use phonic knowledge when reading and writing in all areas of the curriculum.
- Phonics underpins decoding, spelling and early writing, enabling pupils to read fluently and write independently across the curriculum.
- Enables pupils to read, understand and use subject-specific vocabulary in maths, science and the foundation subjects.